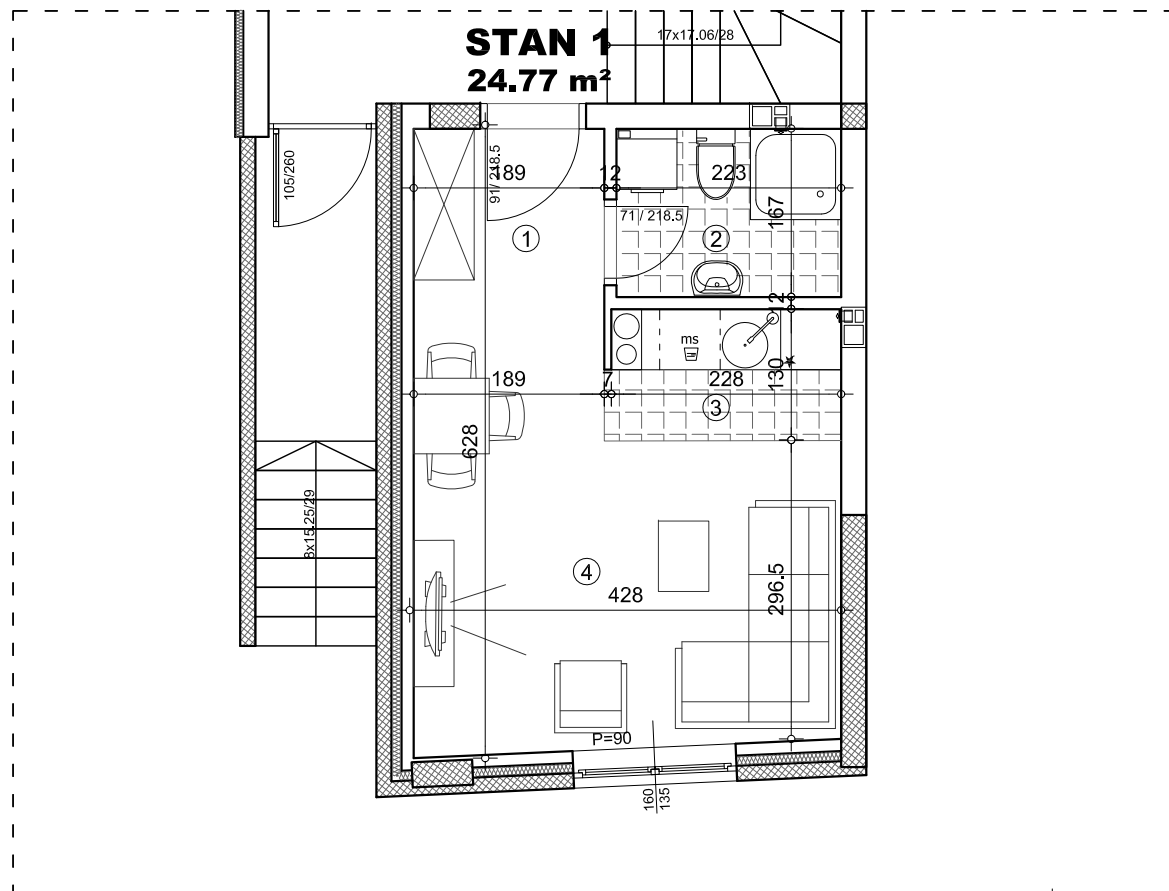


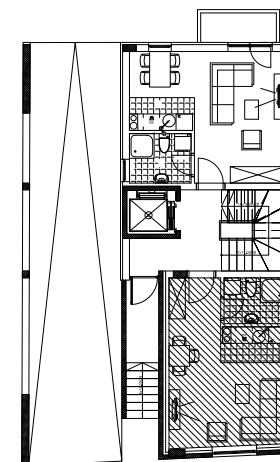
OSNOVA STANA 1:75



STAN 1 - garsonjera

	pod	površina
1 ULAZ	parket	2.83 m²
2 KUPATILO	ker.pl.	3.72 m²
3 KUHINJA	ker.pl.	3.01 m²
4 DNEVNA SOBA	parket	15.97 m²
UKUPNO:		25.53 m²
UKUPNO REDUKOVANO -3%:		24.77 m²

OSNOVA PRIZEMLJA



ulica

